

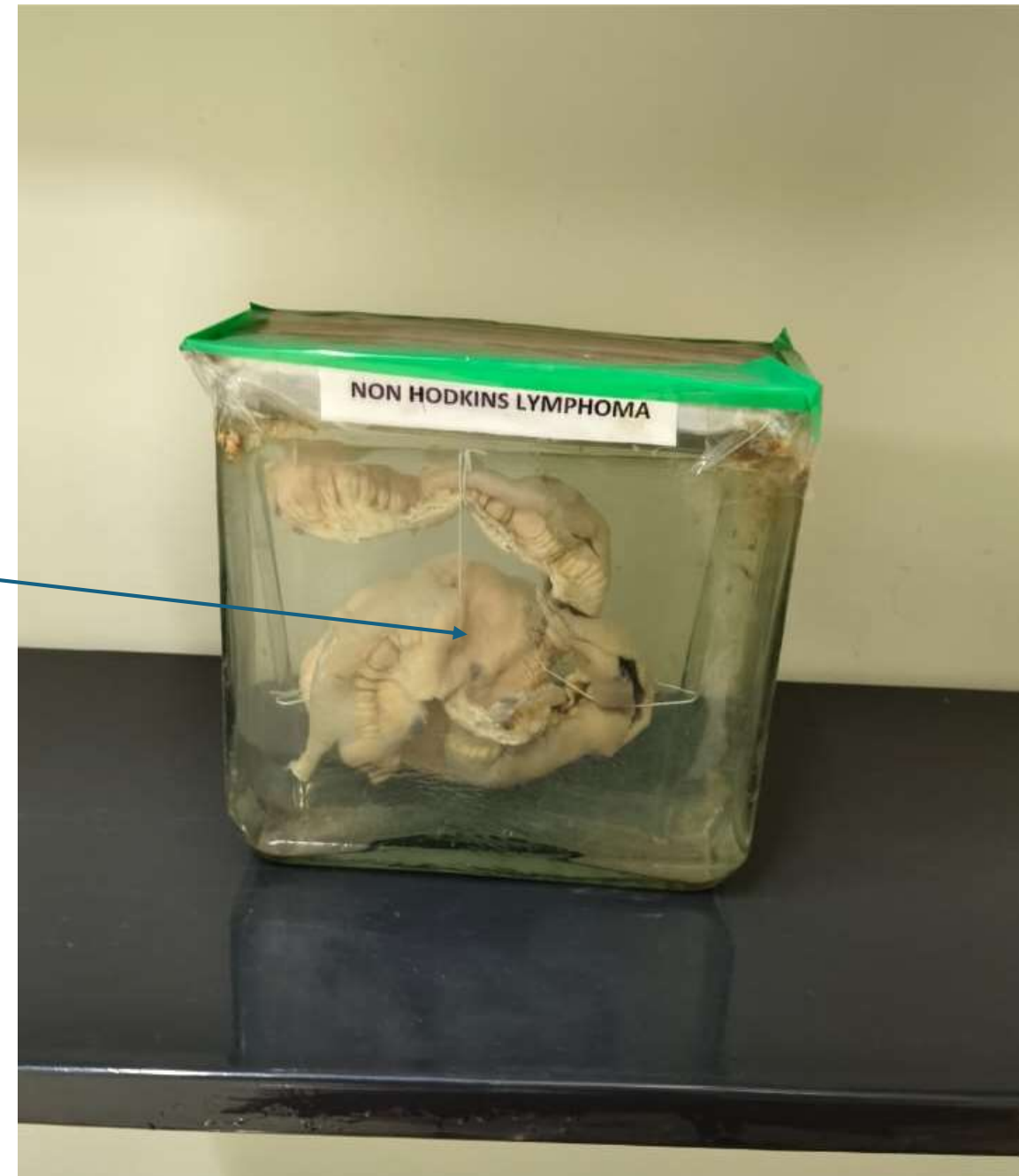
NON-HODGKIN'S LYMPHOMA

Gross:

- Specimen received shows an annular growth involving whole thickness of the small intestine
- Serosal surface is unremarkable.

Microscopy:

- Section of small intestine showing dense lymphocytic infiltration.
- Lymphocytes are small with irregular nuclei, condensed chromatin and scant cytoplasm.
- No RS cells are seen.



FOLLICULAR LYMPHOMA

Gross:-

- Lymph nodes: enlarged, firm, gray-white, homogenous cut surface.
- Spleen/liver: may show enlargement with pale nodules or diffuse infiltration.

Microscopy:-

- Effaced nodal architecture with **nodular/follicular pattern**.
- Follicles lack polarization (no dark & light zones).
- Two main cell types:
 - **Centrocytes** → small cleaved cells with irregular/angulated nuclei.
 - **Centroblasts** → large cells with vesicular nuclei & nucleoli.
- Grading: based on **number of centroblasts/HPF**.

