

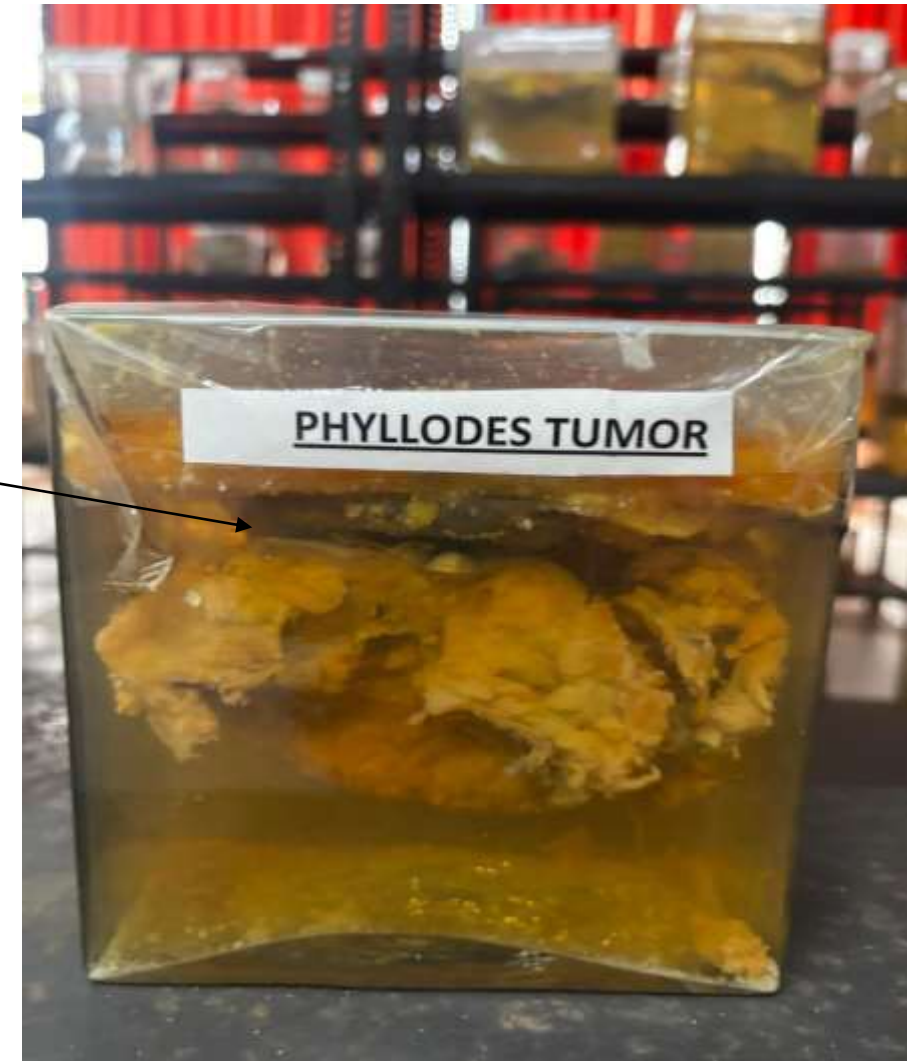
PHYLLODES TUMOR/ CYSTOSARCOMA PHYLLODES

GROSS :

- Received a specimen of breast lump.
- Cut surface shows whitish firm leaf like areas.

MICROSCOPY :

- Section studied shows unencapsulated benign fibroepithelial tumor.
- Tumor cells arranged in intracanalicular pattern.
- Subepithelial condensation with increased stromal cellularity adjacent to epithelium is seen.
- Mitosis/ necrosis not seen.



INVASIVE DUCTAL CARCINOMA

GROSS :

- Received specimen of mastectomy.
- On cutting open, whitish firm tumour is seen, with irregular border.
- Adjacent breast tissue is unremarkable.

MICROSCOPY :

- Sections studied shows invasive breast carcinoma.
- Tumor cells are arranged in few tubules and islands.
- Individual tumour cells are round with vesicular nuclei, prominent nucleoli and moderate amount of cytoplasm.
- Modified RB score = $3+2+2 = 9$, Grade 3.
- Tumour cells are surrounded by Desmo inflammatory infiltrate.



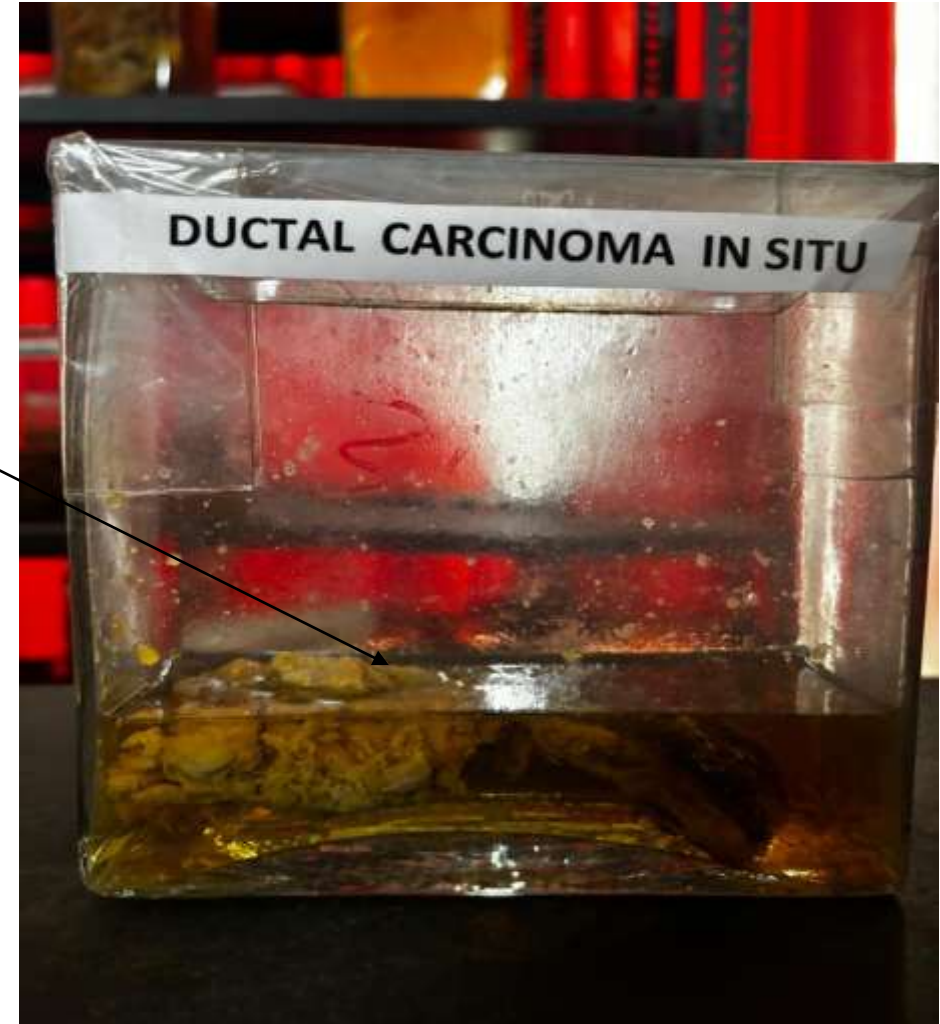
DUCTAL CARCINOMA IN SITU

GROSS :

- Received a specimen of breast tissue.
- Cut surface is firm gritty with multiple yellow punctate flecks representing comedo necrosis.

MICROSCOPY :

- Section studied shows ductal carcinoma in situ of intermediate nuclear grade of comedo and cribriform pattern.
- Myoepithelial cell layer surrounding ducts spaces containing DCIS is intact.



PAGET'S DISEASE OF BREAST

GROSS :

- Received specimen of breast tissue with overlying skin.
- Nipple areolar complex with red-pink crusting lesion, discoloration, thickening, ulceration, and exudate is seen.

MICROSCOPY :

- Section shows tumour cells or clusters of cells spread throughout the epidermis.
- Cells have abundant pale cytoplasm, large irregular nuclei with prominent nucleoli
- Underlying dermis may have chronic inflammation
- Epidermis with hyperkeratosis and possibly ulceration.



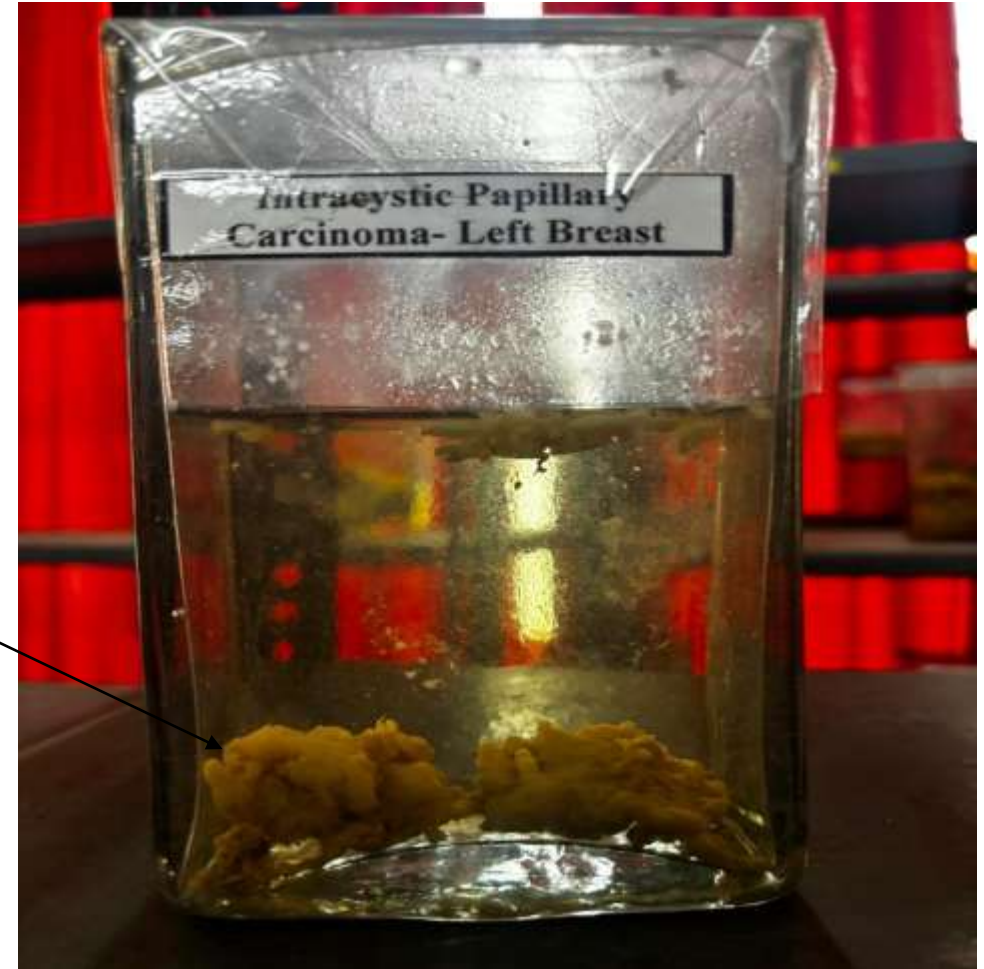
ENCAPSULATED/ INTRACYSTIC PAPILLARY CARCINOMA OF BREAST

GROSS :

- Received specimen of breast tissue.
- Cut section shows well circumscribed encapsulated tumour measuring 2 cm in diameter with papillary excrescences.
- Areas of necrosis seen.

MICROSCOPY :

- Section studied shows an encapsulated tumour.
- Tumour cells arranged in papillary pattern with branching papillae containing fibrovascular cores.
- Papillae are lined by cuboidal to columnar tumour cells with vesicular nuclei, prominent nucleoli and moderate amount of cytoplasm.



FIBROADENOMA OF BREAST

GROSS:

- Received a specimen of breast lump.
- Externally encapsulated.
- On cutting open, whitish firm areas with slit like spaces are seen.

MICROSCOPY:

- Section studied shows an encapsulated benign fibroepithelial tumour.
- Tumour cells are arranged in intracanalicular and pericanalicular pattern.
- Stroma is fibro-myxoid.
- Stromal hypercellularity or subepithelial condensation is not seen.

